



ENGINEERED PRODUCTS
www.kinesik.ca

© KINESIK ENGINEERED PRODUCTS
CONFIDENTIAL AND PROPRIETARY DOCUMENT
ANY ONE OR MORE OF THE FOLLOWING
PATENTS MAY APPLY:
U.S. PATENT NO: 5,775,385, 6,448,790;
6,890,622; 7,000,279 AND 7,680,862.
U.S. PATENTS PENDING 12/374,452;
12/721,279; 14/349,549; 14/376,588;
AND 62/088,707.
C.D.N. PATENTS PENDING CA2638211;
CA2755566; CA2851054 AND
CA2854358

© KENNETH E. SZEKELY.

MATERIAL LIST

ITEM	DESCRIPTION	PART NO.	QTY
1	ADVANTAGE ONE PLATE	ADV-PD-5145-1N	1
2	FASTENER	ATS-FSTN	8

NOTE:
ITEMS 1 & 2 ARE INCLUDED IN PRODUCT PURCHASE.

REFERENCE DRAWINGS

DWG. NO.	DESCRIPTION

No.	DATE	REVISION	APPR.

SCALE: AS NOTED

DESIGNED	KES	DATE	11/06/2014
DRAWN	RWD	DATE	11/06/2014
DRAWN	KES		

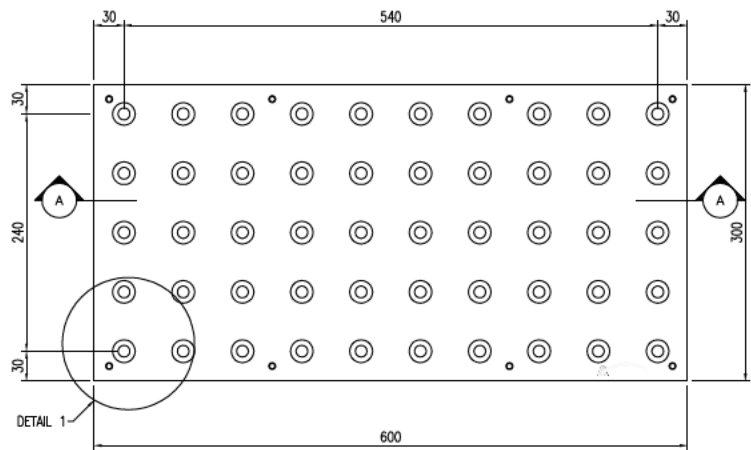
PROJECT MANAGER	
TRADE	TWSI
PART NO.	ADV-PD-5145-1N

MATERIAL: STAINLESS STEEL

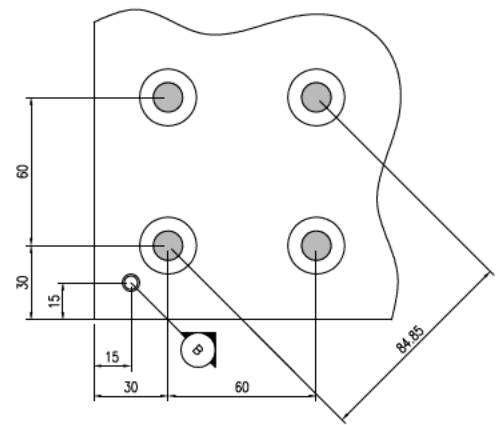
SUBJECT:
Advantage Plate
Tactile Systems
TACTILE WALKING SURFACE INDICATORS

PROJECT:
ADVANTAGE TWSI ATTENTION PLATE
300mm x 600mm
SURFACE APPLIED TILE (TRUNCATED DOME
WITH CARBORUNDUM)
PLANS AND DETAILS

DRAWING NO.	ADV-PD-5135-1N	REV. NO.	0
-------------	----------------	----------	---



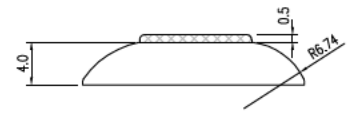
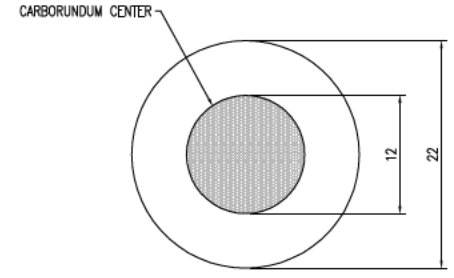
TILE PLAN VIEW
SCALE: 1:5



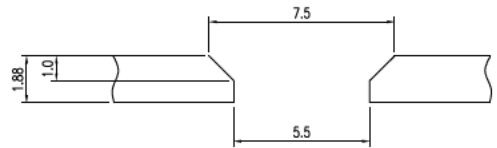
DETAIL 1
SCALE: 1:2



SECTION A-A
SCALE: 1:5



DOME DETAIL
SCALE: 2:1



SECTION B-B
SCALE: 5:1



© KINESIK ENGINEERED PRODUCTS CONFIDENTIAL AND PROPRIETARY DOCUMENT ANY ONE OR MORE OF THE FOLLOWING PATENTS MAY APPLY:
U.S. PATENT NO: 5,775,385, 6,448,790; 6,895,622; 7,000,279 AND 7,680,862.
U.S. PATENTS PENDING 12/374,452; 12/721,279; 14/349,549; 14/376,588; AND 62/088,707.
C.D.N. PATENTS PENDING CA2638211; CA2755566; CA2851054 AND CA2854358
© KENNETH E. SZEKELY.

MATERIAL LIST

ITEM	DESCRIPTION	PART NO.	QTY
1	ADVANTAGE ONE PLATE	ADV-PD-1132-1N	1
2	FASTENER	ATS-FSTN	8

NOTE: ITEMS 1 & 2 ARE INCLUDED IN PRODUCT PURCHASE.

REFERENCE DRAWINGS

DWG. NO.	DESCRIPTION

No.	DATE	REVISION	APPR.

SCALE: AS NOTED

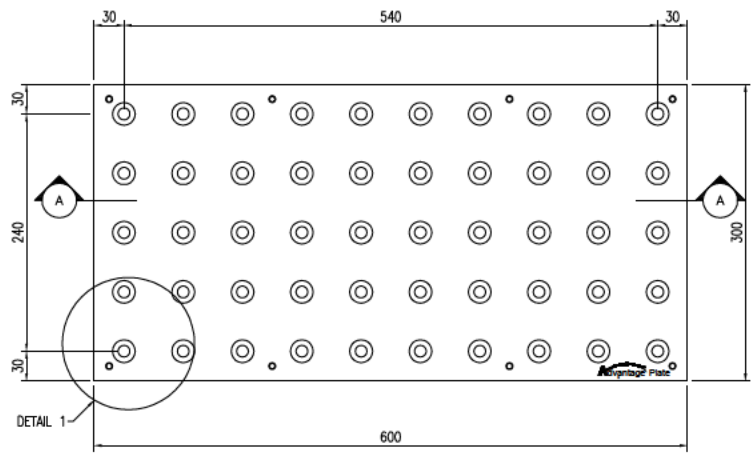
DESIGNED	KES	DATE	11/06/2014
DRAWN	RWD	DATE	11/06/2014
DRAWN	KES		

PROJECT MANAGER	
TRADE	TWSI
PART NO.	ADV-PD-1132-1N
MATERIAL	STAINLESS STEEL

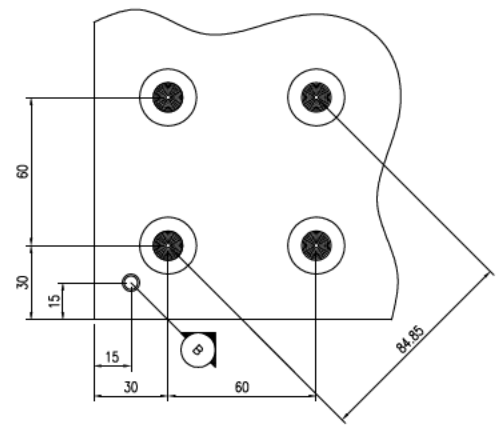
SUBJECT
Advantage Plate
Tactile Systems
TACTILE WALKING SURFACE INDICATORS

PROJECT
ADVANTAGE TWSI ATTENTION PLATE
300mm x 600mm
SURFACE APPLIED TILE (TRUNCATED DOME)
PLANS AND DETAILS

DRAWING NO.	ADV-PD-1132-1N	REV. NO.	0
-------------	----------------	----------	---



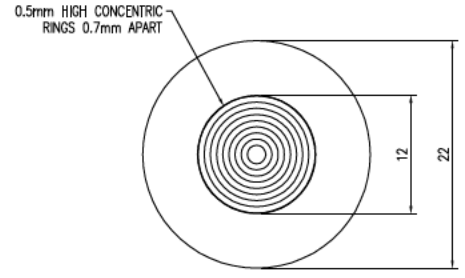
TILE PLAN VIEW
SCALE: 1:5



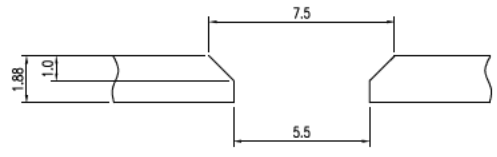
DETAIL 1
SCALE: 1:2



SECTION A-A
SCALE: 1:5



DOME DETAIL
SCALE: 2:1



SECTION B-B
SCALE: 5:1



© KINESIK ENGINEERED PRODUCTS
 CONFIDENTIAL AND PROPRIETARY DOCUMENT
 ANY ONE OR MORE OF THE FOLLOWING
 PATENTS MAY APPLY:
 U.S. PATENT NO. 5,775,385, 6,449,790;
 6,805,822, 7,000,279 AND 7,800,862;
 U.S. PATENTS PENDING 12/374,452;
 12/721,279; 14/349,549; 14/376,586;
 AND 42/066,707.
 C.D.N. PATENTS PENDING CA2858211;
 CA2785566; CA2851054 AND
 CA2854358
 © KENNETH E. SZERELY.

MATERIAL LIST

ITEM	DESCRIPTION	PART NO.	QTY
1	ADVANTAGE ONE PLATE	ADV-PD-1142-1N	1
2	FASTENER	ATS-FSTN	4

NOTE:
 ITEMS 1 & 2 ARE INCLUDED IN PRODUCT PURCHASE.

REFERENCE DRAWINGS

DWG. NO.	DESCRIPTION

No.	DATE	REVISION	APPR.

SCALE
 AS NOTED

DESIGNED	KES	DATE	11/06/2014
----------	-----	------	------------

DRAWN	RWD	DATE	11/06/2014
DRAWN	KES		

PROJECT MANAGER

TRADE	TWSI	PART NO.	ADV-PD-1142-1N
-------	------	----------	----------------

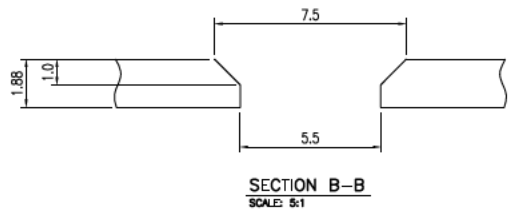
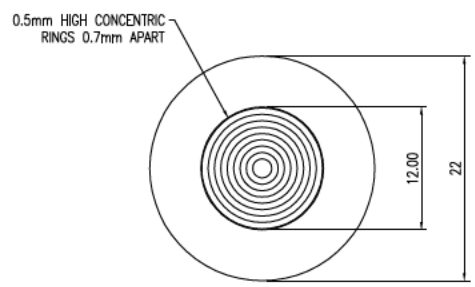
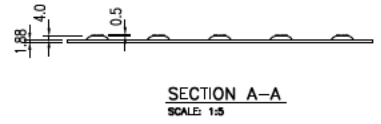
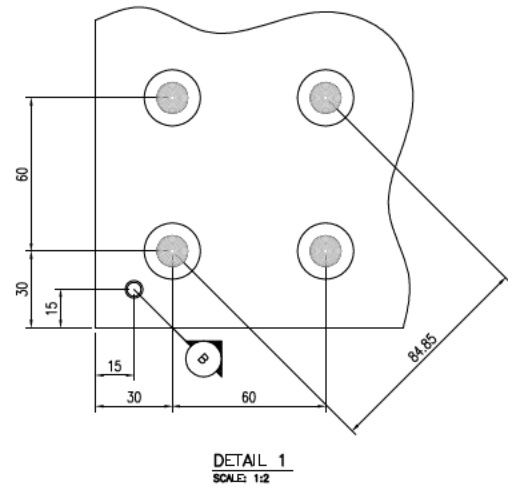
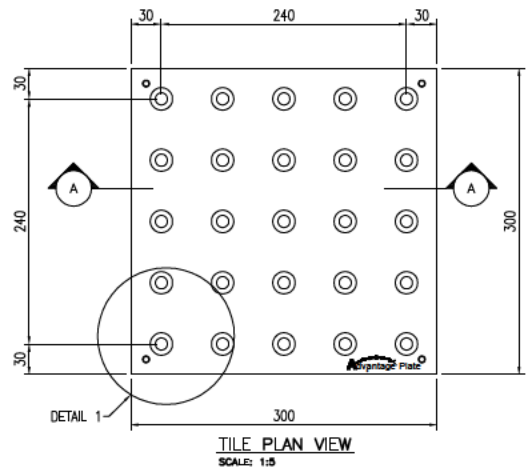
MATERIAL
 STAINLESS STEEL

SUBJECT

 TACTILE WALKING SURFACE INDICATORS

PROJECT
 ADVANTAGE TWSI ATTENTION PLATE
 300mm x 300mm
 SURFACE APPLIED TILE (TRUNCATED DOME
 WITH CONCENTRIC CIRCLES)
 PLANS AND DETAILS

DRAWING NO.	ADV-PD-1142-1N	REV. NO.	0
-------------	----------------	----------	---





© KINESIK ENGINEERED PRODUCTS
 CONFIDENTIAL AND PROPRIETARY DOCUMENT
 ANY ONE OR MORE OF THE FOLLOWING
 PATENTS MAY APPLY:
 U.S. PATENT NO. 5,775,385, 6,449,790;
 6,805,822, 7,000,279 AND 7,860,862;
 U.S. PATENTS PENDING 12/374,452;
 12/721,279; 14/349,549; 14/376,586;
 AND 42/066,707.
 C.D.N. PATENTS PENDING CA2858211;
 CA2785566; CA2851054 AND
 CA2854358
 © KENNETH E. SZERELY.

MATERIAL LIST

ITEM	DESCRIPTION	PART NO.	QTY
1	ADVANTAGE ONE PLATE	ADV-PD-11451-N	1
2	FASTENER	ATS-FSTN	4

NOTE:
 ITEMS 1 & 2 ARE INCLUDED IN PRODUCT PURCHASE.

REFERENCE DRAWINGS

DWG. NO.	DESCRIPTION

No.	DATE	REVISION	APPR.

SCALE
 AS NOTED

DESIGNED	KES	DATE	11/06/2014
----------	-----	------	------------

DRAWN	RWD	DATE	11/06/2014
-------	-----	------	------------

DRAWN	KES		
-------	-----	--	--

PROJECT MANAGER		PART NO.	ADV-PD-11451-N
-----------------	--	----------	----------------

TRADE	TWSI	MATERIAL	STAINLESS STEEL
-------	------	----------	-----------------

SUBJECT

 TACTILE WALKING SURFACE INDICATORS

PROJECT
 ADVANTAGE TWSI ATTENTION PLATE
 300mm x 300mm
 SURFACE APPLIED TILE (TRUNCATED DOME
 WITH CONCENTRIC CIRCLES)
 PLANS AND DETAILS

DRAWING NO.	ADV-PD-11451-N	REV. NO.	0
-------------	----------------	----------	---

